

User Guide

- Thank you for purchasing this product.
- Please read this document before using the fan and use the fan correctly.
- Please keep this sheet in a safe place for future reference.

Included
User Guide (this sheet) 1

User Guide Number 9ZF004-2 (Y1411)

Product specifications

Interface:	USB 2.0/3.0
Electric power supply:	DC5V (fixed) 500mA or above (supplied from USB port)
Wind direction adjustment	Automatic left/right oscillation: Approx. 80° Up/down (manual): Approx. 30°
External dimensions (approximate):	11cm Wide x 10cm Deep x 16.5cm High (4.3in Wide x 3.9in Deep x 6.5in High)
Weight (approximate):	385g / 0.85lb
Length of USB cable (approximate):	1m / 39.4in
Material:	ABS / PP resin

Specification table Numbers in brackets are for when oscillating.

Switch positions	Voltage V	Consumption current mA	Power consumption W	Air volume m ³ /min	Wind speed m/min	Noise dB
High	5	250 (260)	1.25 (1.30)	7	120	36
Low		190 (200)	0.95 (1.00)	5	90	26

* Wind speed measured according to JIS (Japanese Industrial Standards) C9601 at a distance of 50cm.

* Noise measured in a soundproof room

* USB is to be used only for supplying power to the device and not for communicating with a computer.

* For the sake of improvement, product specifications are subject to change with no advance notice.

Safety Advice

Please read carefully and follow the instructions below.

- ⊘ indicates that an action is prohibited.
- ⓘ indicates that the directions must be followed.

Before first use

1. Remove all packaging materials.
2. Check for completeness and shipping damage immediately after unpacking. If your shipment is damaged or incomplete, please contact your dealer.
3. Dispose of the packaging materials in an appropriate way.
4. Packaging materials are not toys. Always keep all packaging materials away from children.

Warning This symbol indicates the danger of death or serious injury.

- ⓘ Do not use if damaged or broken.
- ⊘ Do not use in the following places. May cause a fire or electric shock.
 - Near heating appliances such as stoves or open flames.
 - In strong direct sunlight where temperatures may soar, for example, inside a car standing in the sun.
 - Near any location where organic solvent (thinner, paint, etc.) or gas is being used.
 - Near a humidifier.
 - In bathrooms, near a washing machine, kitchens or near any other wet or damp places.
 - Within the reach of small children.
- ⊘ Do not use without the fan guard. There is a risk of serious injury or death.

Proper care and maintenance

- When the appliance is badly soiled, use a soft cloth with a small amount of mild detergent to clean it. Then rub it dry with a dry cloth.
 - * See the section entitled "Removing and reattaching the rear fan guard."
 - * Do not immerse the electric parts of the appliance in water or other liquids. Do not hold the appliance under running water.
- Do not use benzene, paint thinner, alcohol, or any kind of spray cleaner to treat soiled areas on the case or other parts.

Caution This symbol indicates the possibilities of injury or material damage.

- ⊘ Do not insert fingers or other objects in the fan guard. There is a danger of personal injury or damage or breakage.
- ⊘ Do not disassemble or modify the product. There is danger of personal injury or damage or to the product or breaking it.
- ⓘ Place on a stable surface. If placed on an uneven surface, the fan may fall over or fall from the furniture, resulting in personal injury or damage to the product or breaking it.
- ⊘ Do not cover with woven materials on the fan and keep away from strings and cords. There is danger of personal injury or damage or to the product or breaking it.

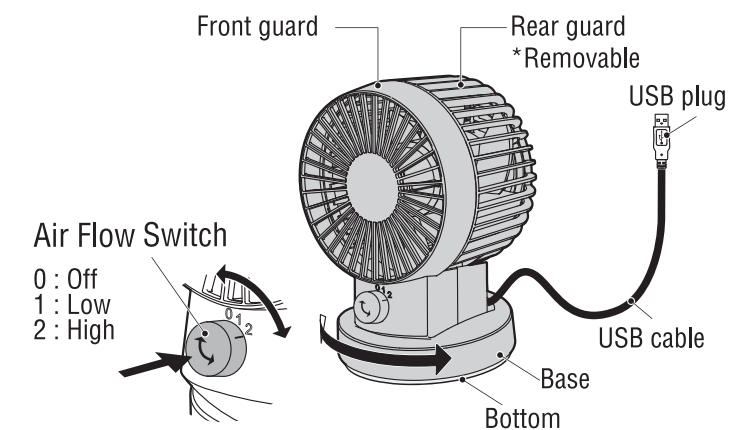
CE This product complies with the EMC requirements of the European Community.

The symbol on the product, packaging, and/or accompanying document indicates that this product should not be disposed with normal household waste. This product shall be taken to the applicable collection point for recycling. The correct disposal of your old product will help prevent potential negative consequences for the environment and human health. For more information about recycling of this product, please contact the shop where you purchased the product, or your local authority.

This symbol on the battery or on the packaging indicates that the battery provided with this product shall not be treated as household waste.

Please inform yourself about the local rules on separate collection of batteries. The correct disposal of batteries helps to prevent potentially negative consequences for the environment and human health.

Parts: names and functions



Air Flow Switch Pressing Oscillation: The whole of the fan above the bottom will move in a range of oscillation. Please place on a horizontal surface. Also, if the USB cable does not have enough slack, it will not oscillate correctly.

Caution

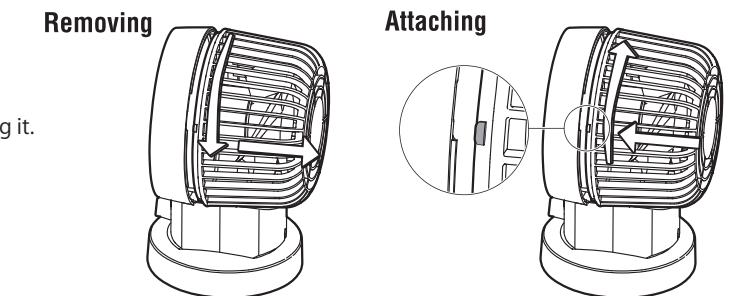
- When cleaning the product or when it is not in use, be sure to remove the USB plug from the USB port.
- When plugging or unplugging the USB cable, make sure to hold it by the plug.
- Be careful when placing the USB cable to avoid a tripping hazard.
- Do not spin the device around, drop it, or apply strong force to it.

Angular adjustment

You can adjust the up and down angle of the fan within a range of about 30° by holding down the base and moving the front fan guard forward or back. * Have the switch set at "0" (Off) before adjusting it.

Removing and attaching the rear fan guard

You can remove the fan guard on the back in order to dust the fan.



Disconnect the USB plug, turn in the direction shown by the arrow, then match up the notches and back to remove.

Caution

- * There are sharp edges on certain areas of the blades, due to their function. To avoid injuries, please wear gloves when handling them.
- * Unplug the USB cable from the computer before servicing the fan.
- * Be sure to attach the fan guard before turning the fan on.

Usage Guide

1. Connect USB cable.

- (1) Set switch at "0" (Off).
- (2) Insert the USB plug into the USB port of computer. When plugging in, pay attention to the position of the plug. Force may damage or break it.
 - * No electric power will be transferred from the USB port if the computer is switched on. Some computers provide electric power even when turned off.
 - * You can also use an AC adapter that transforms an ordinary household electrical outlet into a USB power source. Use an outlet with a rated power voltage of 5V and an electric current of at least 500mA.

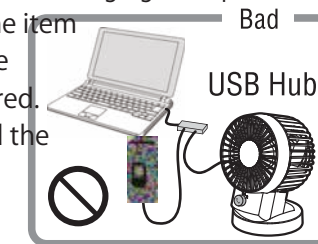
Caution

2. Set the switch to either "1" (Low) or "2" (High).

Troubleshooting

► If the blades fail to rotate

- (1) Check to make sure that the USB cable is plugged in securely.
- (2) Check if the power of the computer is on.
- (3) Is it possible that you are engaged in charging a cell phone from a USB port? You cannot use more than one item at the same time when a large consumption current is required.
- (4) The motor may have reached the end of its lifetime.



► If oscillation stops, or movement is not smooth

- Give the USB cable some slack.
 - Good:** The cable has slack.
 - Bad:** The cable is stretched. Something is on the cable.
- Leave some space around the fan. The whole fan oscillates, so if any objects are in contact with the fan, it will not be able to oscillate correctly.
- The USB cable becomes stiff at low temperatures and it may not oscillate correctly. Use at temperatures of 10° C or higher. It becomes stiff at 10° C, and the lower the temperature, the more it stiffens.

Cautions for use

1. Connecting the fan to a computer while it is supplying power to an external hard disk through a USB port or charging a cell phone or other product at the same time may damage the computer. With USB2.0 standard rated output, voltage 5V, electric current 500mA. This fan should be connected directly to a USB port. We will not be responsible for any expense, financial loss, or other losses that may result from the use of this product.
2. To prolong the life of your fan
 - (1) Do not use it to cool down a computer.
 - (2) Do not use it to cool down a computer. The fan may cause unwanted noise when used next to a television set or radio. Please use it at a suitable distance from televisions and radios.