

# Furniture Catalogue

- 2022 -



**MUJI**  
無印良品



# Table of Contents

Living & Dining Furniture	3
Stacking Shelf Units	10
Steel Shelving Units	13
Beds & Mattresses	16



# Living & Dining Furniture



## Living Dining Tables



Table #2  
W51.2" x D25.6" x H24"  
4549738727804  
\$490.00

Oak Table #4  
W51.2" x D31.5" x H23.6"  
4550182598445  
\$589.00

Oak Table #3  
W59.1" x D31.5" x H23.6"  
4550182598438  
\$689.00





## Living Dining Sofa Chair



Sofa Chair with Arm  
(Arm sold separately)  
21.7"W x 30.7"D x 30.3"H  
4550182598469  
\$499.00



Arm for sofa chair  
W21.7" x D27.2" x H29.5"  
4547315253739  
\$49.00

## Living Dining Benches



Oak Bench #1  
44.5"W x 18.1"D x 15.9"H  
4550182598476 / 4549738371106  
\$399.00



Cotton Canvas Cover  
Beige  
4550182583922  
\$58.90



Cotton Canvas Cover  
Navy  
4550182584882  
\$58.90



Cotton Polyester Cover  
Beige  
4550182188165  
\$69.90



Cotton Polyester Cover  
Brown  
4550182188172  
\$69.90



Cotton Linen Cover  
Ecru  
4550002101671  
\$89.90



Cotton Linen Cover  
Brown  
4550002101688  
4549738966654  
\$89.90

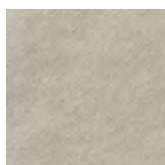


Cotton Cover  
Dark Brown  
4550002101619  
\$69.90

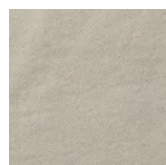
## Covers for Living Dining Sofa Chair



Cotton Cover  
Dark Brown  
4549738740018  
\$89.00



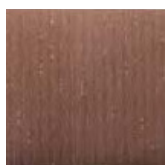
Cotton Polyester Cover  
Beige  
4550182188141  
\$79.90



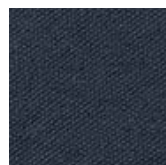
Cotton Canvas Cover  
Beige  
4550182583915  
\$68.90



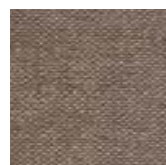
Cotton Linen Cover  
Ecru  
4549738966623  
\$89.00



Cotton Polyester Cover  
Brown  
4550182188158  
\$79.90



Cotton Canvas Cover  
Navy  
4550182584875  
\$68.90



Cotton Linen Cover  
Brown  
4549738966630  
4549738740056  
\$89.00



Oak Bench #2  
22.0"W x 18.1"D x 15.9"H  
4550182598483  
\$289.00



Cotton Canvas Cover  
Beige  
4550182583939  
\$38.90



Cotton Canvas Cover  
Navy  
4550182584899  
\$38.90



Cotton Polyester Cover  
Beige  
4550182188189  
\$44.90



Cotton Linen Cover  
Ecru  
4549738966661  
\$59.90



Cotton Linen Cover  
Brown  
4550002101701  
4549738966678  
\$59.90



## Natural Oak Table with Drawer



55.1"W x 31.5"D x 28.3"H  
4550182855319  
\$990.00

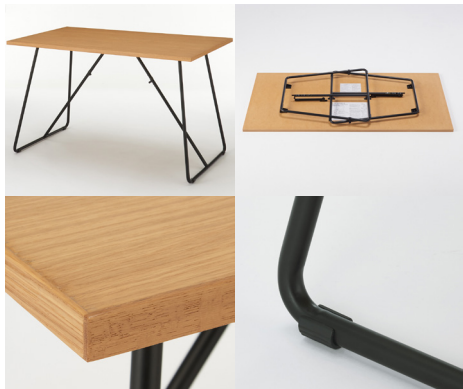


## Oak Folding Tables



35.4"W x 17.7"D x 13.8"H  
4550002528263  
\$349.00

47.2"W x 27.6"D x 28.3"H  
4550002603960  
\$399.00



## Wooden Table Tops with Legs Set of 4



47.2"W x 23.6"D  
4550182583137  
\$399.00

55.1"W x 31.5"D  
4550182583151  
\$499.00

70.9"W x 31.5"D  
4550182583168  
\$599.00

13.8"  
4550182586152  
\$120.00

28.3"  
4550182586176  
\$150.00

## Oak Tables with Round Legs



21.7"W x 13.8"D x 17.3"H  
4550002065966  
\$449.00



59.1"W x 31.5"D x 28.3"H  
4547315901982  
\$1699.00

70.9"W x 31.5"D x 28.3"H  
4547315901999  
\$1899.00





## Natural Oak Benches



18.9"W x 11.8"D x 17.3"H  
4550344503072  
\$169.00



39.4"W x 11.8"D x 17.3"H  
4547315892358  
\$199.00



47.2"W x 14.6"D x 17.3"H  
4550182855258  
\$749.00



39.4"W x 13.8"D x 17.3"H  
4550002065959  
\$899.00

## Natural Oak / Walnut Chairs



21.7"W x 12.6"D x 29.1"H  
4547315902040  
\$799.00



17.7"W x 20.1"D x 30.3"H  
4550182009255  
\$219.00



17.7"W x 20.1"D x 30.3"H  
4550182009262  
\$249.00



## Oak / Walnut Low Tables



110W x 55D x 35H CM  
4550182219166  
\$199.00



110W x 55D x 35H CM  
4550182219173  
\$249.00

## Oak / Walnut Middle-Height Tables



110W x 55D x 50H CM  
4550182219180  
\$249.00



110W x 55D x 50H CM  
4550182219197  
\$299.00



# Stacking Shelf Units

These open cube shelves can be used as storage, bookshelves, and the shelves themselves can be used as room dividers.



## Stacking Shelf Units - Oak

Oak Veneer, Stainless Steel Screws



W16.5" x D11.2" x H32.1"  
4550002850104 / 4549738932093  
\$199.00



W16.5" x D11.2" x H47.6"  
4550002850111 / 4549738932109  
\$249.00



W32.3" x D11.2" x H47.6"  
4550002850210 / 4549738932284  
\$399.00



W48.0" x D11.2" x H47.6"  
4549738932277 / 4550002850203  
\$599.00



W32.1" x D11.2" x H32.1"  
4549738932154 / 4550002850135  
\$249.00



W32.1" x D11.2" x H47.6"  
4550002850142  
\$299.00



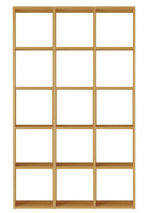
W32.1" x D11.2" x H78.7"  
4550002850159 / 4549738932178  
\$399.00



W16.5" x D11.2" x H78.7"  
4550002850128 / 4549738932116  
\$299.00



W32.3" x D11.2" x H78.8"  
4550002850197 / 4549738932260  
\$549.00



W48.0" x D11.2" x H78.8"  
4550002850180 / 4549738932253  
\$799.00



# Stacking Shelf Units

The modular design of Stacking Shelves allow for endless combinations of storage to best suit your space. Create your own customized unit.



# Steel Shelving Units

Sturdy shelving units made of stainless steel that are both functional and aesthetically suits any space.



## Additional Stacking Shelf Units - Oak

Oak Veneer, Stainless Steel Screws



W15.7" x D11.2" x H32.1"  
4549337263185  
\$149.00



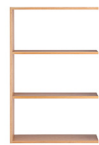
W15.7" x D11.2" x H47.6"  
4550002855727 / 4549337263192  
\$199.00



W15.7" x D11.2" x H78.7"  
4550002855734 / 4549337263208  
\$269.00



W31.1" x D11.2" x H32.1"  
4549337263246  
\$249.00



W31.1" x D11.2" x H47.6"  
4549337263253  
\$289.00

## Steel Shelving Units - Light Gray

Stainless Steel, Epoxy Resin



W22.8" x D16.1" x H32.7"  
4550002999155  
\$99.90



W22.8" x D16.1" x H47.2"  
4550002999148  
\$129.00



W22.8" x D16.1" x H69.0"  
4550002999131  
\$149.00



W33.8" x D16.1" x H32.7"  
4550002999117  
\$129.00



W33.8" x D16.1" x H47.2"  
4550002999100  
\$149.00



W33.8" x D16.1" x H69.0"  
4550002999094  
\$199.00

# Steel Shelving Units - Oak

Stainless Steel, Oak Veneer



W22.8" x D16.1" x H32.7"  
4549337238985 / 4550344911419  
\$299.00



W22.8" x D16.1" x H47.2"  
4549337238978  
\$349.00



W22.8" x D16.1" x H69.0"  
4549337236493  
\$399.00



W33.8" x D16.1" x H32.7"  
4549337239012 / 4550344911440  
\$399.00



W33.8" x D16.1" x H47.2"  
4549337239005 / 4550344911433  
\$449.00



W33.8" x D16.1" x H69.0"  
4549337238992 / 4550344911426  
\$499.00

# Steel Shelving Units - Stainless

Stainless Steel



W22.8" x D16.1" x H32.7"  
4550002999087  
\$349.00



W22.8" x D16.1" x H47.2"  
4550002999070  
\$399.00



W22.8" x D16.1" x H69.0"  
4550002999063  
\$449.00



W33.8" x D16.1" x H32.7"  
4550002999056  
\$399.00



W33.8" x D16.1" x H47.2"  
4550002999049  
\$449.00



W33.8" x D16.1" x H69.0"  
4550002999032  
\$499.00

# Steel Shelving Units

## Additional Shelves / Frames / Cross Bars

Optional pieces that enhance the usage of stainless unit shelving. Pieces include additional shelves, side frames, and cross bars.

### Additional Shelves

Light Gray



W16.5" 4550002998561 \$28.90  
W22.0" 4550002998554 \$34.90  
W33.0" 4550002998547 \$38.90

Oak



W16.5" 4549337167049 \$58.90  
W22.0" 4549337167032 \$68.90  
W33.0" 4549337167025 \$78.90

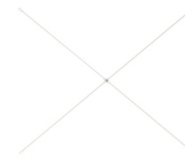
Stainless



W16.5" 4550002998523 \$69.90  
W22.0" 4550002998516 \$79.90  
W33.0" 4550002998509 \$89.90  
4934761179155

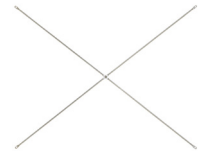
### Additional Cross Bars

Light Gray



W16.5" - W22.0" 4550002998745 \$9.90  
W33.0" - W15.7" 4550002998738 \$9.90

Stainless



W16.5" - W22.0" 4934761179278 \$14.90  
W33.0" - W15.7" 4934761179261 \$19.90

### Additional Frames



Light Gray  
W32.6" x D16.1" 4550002998370  
\$28.90

Stainless Steel  
W32.6" x D16.1" 4934761179247  
\$59.90



Light Gray  
W47.2" x D16.1" 4550002998387  
\$38.90

Stainless Steel  
W47.2" x D16.1" 4934761179230  
\$69.90



Light Gray  
W69.0" x D16.1" 4550002998394  
\$48.90

Stainless Steel  
W47.2" x D16.1" 4934761179223  
\$89.90



# Beds & Mattresses

Combine various storage solutions & parts to create a bed tailored to you & your lifestyle. We've carefully created and developed various bed options to make your sleep and daily life comfortable.



## Pocket Coil Mattress

A mattress designed with individually wrapped coils to fully support your body.

### Why pocket coil mattress?

Each independent barrel shaped spring is wrapped in a non-woven fabric, and each coil functions independently to provide the optimum firmness that is most suitable for proper support & posture.

- Urethane Foam 15mm, Coil thickness:1.9mm, Height: 180mm, Height wrapped in casing: 140mm
- Features numerous areas of firmer support to hold your body weight
- Creates an even distribution of weight to ensure a stable posture
- Reduces the amount of sinking



Single  
W38.0" x D76.7" x H7.5"  
4549337096561  
\$549.00

Double  
W55.0" x D76.7" x H7.5"  
4549337096578  
\$699.00

Queen  
W63.0" x D76.7" x H7.5"  
4549337096585  
\$799.00

### Rotate your mattress to extend its lifespan

We recommend rotating your mattress 180 degrees every season, as the strength of the springs may deteriorate if weight is continuously applied to the same areas. By swapping the mattress orientation and distributing your body weight evenly over time, you can reduce the load on the springs. Make sure to also periodically air the mattress by standing it up for a brief time.

## Wooden Bed

With its simplistic design, the bed frame suits any room, while featuring ample storage space underneath due to the 11.8" length legs. Maximize vertical space by using various storage options under the bed.



Single  
W39.4" x D79.3" x H29.1"  
4550182944495  
\$499.00

Double  
W56.3" x D79.3" x H29.1"  
4550182944518  
\$599.00

Queen  
W64.2" x D79.3" x H29.1"  
4550182944525  
\$699.00

## Wooden Bed Storage Box Set of 2



Oak  
4550182219517  
\$249.00



# Information

## Stores / Delivery / Return & Exchange Policy

### Ontario

**MUJI Atrium**  
20 Dundas St West,  
Toronto, ON M5G 2C2  
Tel. 416.591.2233

**MUJI Yorkdale**  
3401 Dufferin Street,  
Toronto, ON, M6A 2T9  
Tel. 416.479.1204

**MUJI Scarborough Town Centre**  
300 Borough Drive,  
Scarborough, Ontario, M1P 4P5  
Tel. 416.643.0756

**MUJI Markville**  
5000 Highway 7,  
Markham, ON, L3R 4M9  
Tel. 905.201.3587

**MUJI Square One**  
100 City Centre Drive,  
Mississauga, ON, L5B 2C9  
Tel. 905.276.2737

### Online Store

www.MUJI.ca

### British Columbia

**MUJI Guildford**  
10355 152ST, #1047,  
Surrey, BC V3R 7C1  
Tel. 604.238.0990

**MUJI Robson Street**  
1125 Robson Street,  
Vancouver, BC, V6E 1B5  
Tel. 604.831.2718

**MUJI Richmond Centre**  
6551 No 3 Rd, Unit 1624  
Richmond, BC V6Y 2B6  
Tel. 604.248.1558

**MUJI Metrotown**  
4820 Kingsway, Unit M163  
Burnaby, BC, V5H 4J2  
Tel. 604.638.8180

## Pocket Coil Mattress with Legs

It's a simple bed that focuses on comfort and materials. The versatile design allows it to be used as a sofa. Compared to our other beds, its design is more compact and its easier to take apart when moving.

### Pocket Coil Mattress with Legs and Cover (Legs sold separately)



Single  
W38.6" x D78.0" x H10.2"  
4550002766955  
\$475.00

Double  
W55.1" x D78.0" x H10.2"  
4550002766979  
\$875.00

### Wooden Legs



Natural M8  
12 CM  
4550002529406  
\$19.00



Brown M8  
20 CM  
4550002529437  
\$24.00



Natural M8  
26 CM  
4550002529444  
\$24.00

## Delivery Fee

Carry-in Service Starting from \$75 based on location  
Doorstep Service Starting from \$50 based on location

\*Shipping rates, charges, and services are subject to change without notice.  
\*Please check with sales associate for more information.

## Delivery Area & Time

Limited areas only, please check with sales associate.

Deliveries are from Monday to Friday (10 am - 4pm), varies based on location.

\*\*Please schedule an appointment for your delivery after your purchase in store.

## Return / Exchange Policy

- Merchandise may be returned / exchanged to any MUJI store location within 30 days of purchase with receipt.
- All returned merchandise must be unopened in original packaging, new condition, unused with original tags.
- No refunds on delivery fee and handling fee for any returned / exchanged merchandise.
- No refunds on delivery fee and handling fee for packages that don't fit through the passageways and are returned to the store. Please your spaces to ensure delivery is possible.
- MUJI reserves the right to deny any return/exchange based on the condition of the merchandise.

All product and price information may be subject to change. Any dimensions quoted are for guidance only. Prices and product details should be checked at one of MUJI Canada stores before any purchases. All products are subject to availability.  
© 2022 MUJI CANADA LIMITED All Rights Reserved.

\*\*Please check the dimensions and package sizes carefully to ensure they fit through the passageways of your home (hallways, doorways, and elevators) prior to purchasing. There is no refund on delivery and handling fees due to package sizes being unable to fit through any passageways.