

Furniture Catalogue

- 2024 -



MUJI
無印良品

Table of Contents

| | |
|---------------------------|----|
| Living & Dining Furniture | 2 |
| Stacking Shelf Units | 13 |
| Steel Shelving Units | 18 |
| Beds & Mattresses | 23 |



Living & Dining Furniture



Polypropylene Stackable Stool

Light Grey
W17" x D13.4" x H17.8"
4550002850692
\$79.00

Dark Grey
W17" x D13.4" x H17.8"
4550344859957
\$79.00



Living Dining Tables

Table 2
W51.1" x D25.6" x H23.7"
4550182598421
\$500.00

Table 3
W59.1" x D31.5" x H23.7"
4550182598438
\$700.00



Living Dining Sofa Chair

Sofa Chair W21.7" x D30.8" x H30.4"
4550344910870
\$500.00

Polyester Plainweave Cover Grey Beige
4550583679927
\$100.00

Brown
4550583680183
\$100.00

Charcoal
4550583680190
\$100.00

Cotton Polyester Cover Beige
4550182188141
\$100.00

Brown
4550182188158
\$100.00



Living Dining Bench 1

Oak Bench 1 W44.5" x D18.2" x H16"
4550344910917
\$550.00

Polyester Plainweave Cover Grey Beige
4550583679934
\$100.00

Brown
4550583679958
\$100.00

Charcoal
4550583679972
\$100.00

Cotton Polyester Cover Beige
4550182188165
\$100.00

Brown
4550182188172
\$100.00



Living Dining Bench 2

Oak Bench 2 W22.1" x D18.2" x H16"
4550344910931
\$450.00

Polyester Plainweave Cover Grey Beige
4550583679941
\$50.00

Brown
4550583679965
\$50.00

Charcoal
4550583679989
\$50.00





Oak Tables with Round Legs

Limited Quantity

W59.1" x D31.5" x H28.3"
4547315901982
\$1,700.00



Natural Oak Benches

W18.9" x D11.8" x H17.3"
4550344503072
\$150.00



Limited Quantity

W39.4" x D13.8" x H17.3"
4550002065959
\$800.00



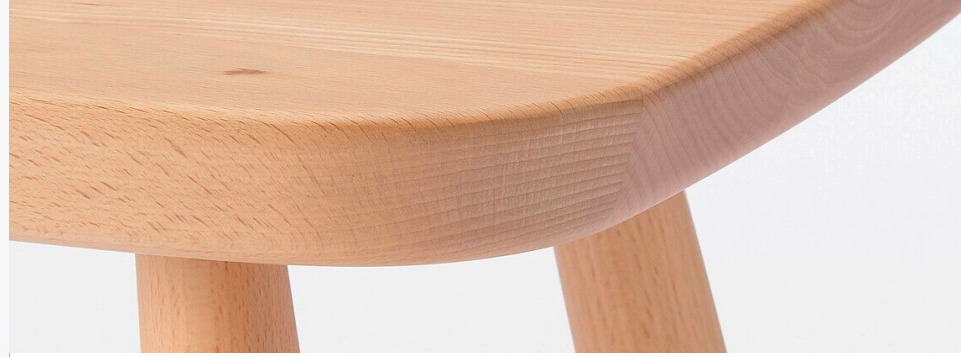
Natural Oak / Walnut Chairs

Natural
W17.7" x D20.1" x H30.3"
4550182009255
\$300.00

Walnut
W17.7" x D20.1" x H30.3"
4550182009262
\$250.00

Beech Dining Series

Furniture designed with soft, rounded edges made from upcycled imperfect materials. Each piece features the unique knots, natural wood grain, and varying shades of beech wood. Processed by Japanese craftsmen with the latest technology, the Beech Dining Series adds a natural touch to your dining area.



Beech Table Round Legs

Large
W70.9" x D31.5" x H28.4"
4550512892373
\$1,900.00

Small
W59.1" x D31.5" x H28.4"
4550512892410
\$1,600.00



Beech Bench Round Legs

W39.4" x D13.8" x H17.4"
4550512892403
\$700.00



Beech Stool Round Legs

W21.7" x D13.8" x H17.4"
4550512892380
\$500.00



Beech Armchair Round Legs

W21.7" x D12.6" x H29.2"
4550512892397
\$700.00



Notice: Please carefully review the Care Instructions & Manual included with the Beech Dining Series. Abrasive cleaning materials, like alcohol, is not recommended for use with the furniture. Kindly refer to the Manual for additional details.

High Back Reclining Sofa & Ottoman

A sofa chair with reclining abilities for ultimate relaxation. The back can be adjusted to six different angles while the headrest is adjustable to 14 different angles to your ideal lounging position.



High Back Reclining Sofa
 W29.1" x D44.9" x H35.2 CM
 4550002480356
 \$550.00

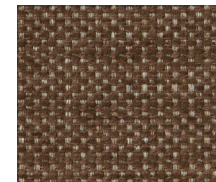


Ottoman
 W27" x D17" x H15"
 4550002480363
 \$300.00

Cotton Polyester Covers



Beige 4550182188264
 \$250.00 (For Sofa)
 4550182188288
 \$60.00 (For Ottoman)



Brown 4550182188271
 \$250.00 (For Sofa)
 4550182188295
 \$60.00 (For Ottoman)



Urethane Pocket Coil Sofa

*Legs sold separately, only compatible with 12CM wooden legs.



Sofa (3 Seats)

W88.6" x D35.4" x H29.5"
4550182845204
\$1000.00



Sofa (2.5 Seats)

W76" x D35.7" x H27.6"
4550182845167
\$900.00



Sofa (1 Seat)

W30.3" x D33.4" x H27.6"
4550182845174
\$500.00




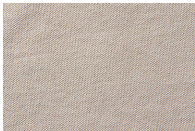


Ottoman

W31.5" x D24.9" x H12.6"
4550182844627
\$250.00



Wooden Legs

Natural M8
12CM
4550002529406
\$50.00

| Sofa Cover | 1 Seat | 2 Seats | 3 Seats | Ottoman |
|---|---|----------------------------------|----------------------------------|----------------------------------|
|  Cotton Canvas Ecrú |  | \$350.00 4550182606553 | \$450.00 4550182606546 | \$150.00 4550182606591 |
|  Cotton Canvas Beige |  | \$350.00 4550182606874 | \$450.00 4550182606867 | \$150.00 4550182606911 |
|  Polyester Plainweave Grey Beige | \$250.00 4550583679996 | \$350.00 4550583680022 | \$450.00 4550583680053 | \$150.00 4550583680084 |
|  Polyester Plainweave Brown | \$250.00 4550583680008 | \$350.00 4550583680039 | \$450.00 4550583680060 | \$150.00 4550583680091 |
|  Polyester Plainweave Charcoal | \$250.00 4550583680015 | \$350.00 4550583680046 | \$450.00 4550583680077 | \$150.00 4550583680107 |

Stacking Shelf Units

These open cube shelves can be used as storage, bookshelves, and the shelves themselves can be used as room dividers.



Stacking Shelf Units - Oak

Oak Veneer, Stainless Steel Screws

Standard



Small
W16.5" x D11.2" x H32.1"
4550002850104
\$250.00



Medium
W16.5" x D11.2" x H47.6"
4550002850111
\$300.00



Large
W16.5" x D11.2" x H78.7"
4550002850128
\$400.00



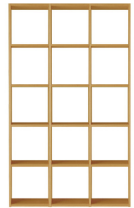
3 x 2 Compartment
W32.3" x D11.2" x H47.6"
4550002850210
\$500.00



3 x 3 Compartment
W48.0" x D11.2" x H47.6"
4550002850203
\$700.00



5 x 2 Compartment
W32.3" x D11.2" x H78.8"
4550002850197
\$700.00



5 x 3 Compartment
W48.0" x D11.2" x H78.8"
4550002850180
\$900.00

Wide



Small
W32.1" x D11.2" x H32.1"
4550002850135
\$300.00



Medium
W32.1" x D11.2" x H47.6"
4550002850142
\$350.00



Large
W32.1" x D11.2" x H78.7"
4550002850159
\$450.00

Stacking Shelf Units

These open cube shelves can be used as storage, bookshelves, and the shelves themselves can be used as room dividers.



Stacking Shelf Units - Oak

Oak Veneer, Stainless Steel Screws

Standard



Small
W16.5" x D11.2" x H32.1"
4550002850104
\$250.00



Medium
W16.5" x D11.2" x H47.6"
4550002850111
\$300.00



Large
W16.5" x D11.2" x H78.7"
4550002850128
\$400.00



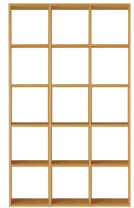
3 x 2 Compartment
W32.3" x D11.2" x H47.6"
4550002850210
\$500.00



3 x 3 Compartment
W48.0" x D11.2" x H47.6"
4550002850203
\$700.00



5 x 2 Compartment
W32.3" x D11.2" x H78.8"
4550002850197
\$700.00



5 x 3 Compartment
W48.0" x D11.2" x H78.8"
4550002850180
\$900.00

Wide



Small
W32.1" x D11.2" x H32.1"
4550002850135
\$300.00



Medium
W32.1" x D11.2" x H47.6"
4550002850142
\$350.00



Large
W32.1" x D11.2" x H78.7"
4550002850159
\$450.00

Stacking Shelf Units

The modular design of Stacking Shelves allow for endless combinations of storage to best suit your space. Create your own customized unit.



Steel Shelving Units

Sturdy shelving units made of stainless steel that are both functional and aesthetically suits any space.



Additional Stacking Shelf Units - Oak

Oak Veneer, Stainless Steel Screws

Standard



Small
W15.7" x D11.2" x H32.1"
4550002855710
\$200.00



Medium
W15.7" x D11.2" x H47.6"
4550002855727
\$250.00

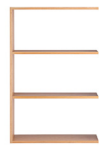


Large
W15.7" x D11.2" x H78.7"
4550002855734
\$350.00

Wide



Small
W31.1" x D11.2" x H32.1"
4549337263246
\$250.00



Medium
W31.1" x D11.2" x H47.6"
4549337263253
\$300.00



Large
W31.1" x D11.2" x H78.7"
4549337263260
\$400.00

Steel Shelving Units - Light Gray

Stainless Steel, Epoxy Resin

Standard



Small
W22.8" x D16.1" x H32.7"
4550344911624
\$200.00



Medium
W22.8" x D16.1" x H47.2"
4550344911617
\$250.00



Large
W22.8" x D16.1" x H69.0"
4550344911600
\$300.00

Wide



Small
W33.8" x D16.1" x H32.7"
4550344911587
\$250.00



Medium
W33.8" x D16.1" x H47.2"
4550344911570
\$300.00



Large
W33.8" x D16.1" x H69.0"
4550344911563
\$350.00



Steel Shelving Units - Oak

Stainless Steel, Oak Veneer

Standard



Small
W22.8" x D16.1" x H32.7"
4550344911419
\$350.00



Medium
W22.8" x D16.1" x H47.2"
4550344911402
\$400.00



Large
W22.8" x D16.1" x H69.0"
4550344911396
\$450.00

Wide



Small
W33.8" x D16.1" x H32.7"
4550344911440
\$400.00



Medium
W33.8" x D16.1" x H47.2"
4550344911433
\$450.00



Large
W33.8" x D16.1" x H69.0"
4550344911426
\$500.00

Steel Shelving Units - Stainless

Stainless Steel

Standard



Small
W22.8" x D16.1" x H32.7"
4550344911389
\$350.00



Medium
W22.8" x D16.1" x H47.2"
4550344911372
\$400.00



Large
W22.8" x D16.1" x H69.0"
4550344911365
\$450.00

Wide



Small
W33.8" x D16.1" x H32.7"
4550344911853
\$400.00



Medium
W33.8" x D16.1" x H47.2"
4550344911747
\$450.00



Large
W33.8" x D16.1" x H69.0"
4550344911730
\$500.00

Steel Shelving Units

Additional Parts

Optional pieces that enhance the usage of stainless unit shelving. Pieces include additional shelves, side frames, and cross bars.

Additional Shelves

Light Gray



| | | |
|---------------|----------|---------|
| 4550002998561 | Mini | \$40.00 |
| 4550002998554 | Standard | \$50.00 |
| 4550002998547 | Wide | \$60.00 |

Oak



| | | |
|---------------|----------|---------|
| 4549337167049 | Mini | \$50.00 |
| 4549337167032 | Standard | \$80.00 |
| 4549337167025 | Wide | \$90.00 |

Stainless Steel



| | | |
|---------------|----------|---------|
| 4550002998523 | Mini | \$70.00 |
| 4550002998516 | Standard | \$80.00 |
| 4550002998509 | Wide | \$90.00 |

Oak - Corner Type



Oak 4549337413887 \$150.00
(Wide SUS only)

Oak - Narrow Type



Oak 4549337413917 \$50.00
Stainless 4549337413931 \$60.00
(Wide SUS only)

Additional Frames



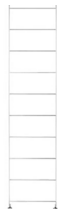
Small - Light Gray
4550344911655
\$40.00

Small - Stainless Steel
4550344911532
\$80.00



Medium - Light Gray
4550344911662
\$50.00

Medium - Stainless Steel
4550344911525
\$95.00



Large - Light Gray
4550344911679
\$60.00

Large - Stainless Steel
4550344911518
\$110.00

Additional Cross Bars / Wardrobe Bars



Light Gray 4550002998745 Standard \$15.00
4550002998738 Wide \$20.00

Stainless Steel 4934761179278 Standard \$25.00
4934761179261 Wide \$30.00



Stainless Steel 4934761179797 Wide \$35.00

Other Additional Parts



Back Panel (Wide SUS only)

Light Gray Small 4550182141184 \$30.00
Large 4550182141207 \$40.00

Dark Gray Small 4548076580997 \$30.00
Large 4548076580775 \$40.00



Reinforcement Part For Frame (Wide SUS only)

4548076580874 \$40.00



Height Adjustable Bracket

4548076580850 \$20.00



Beds & Mattresses

Combine various storage solutions & parts to create a bed tailored to you & your lifestyle. We've carefully created and developed various bed options to make your sleep and daily life comfortable.



Pocket Coil Mattress

A mattress designed with individually wrapped coils to fully support your body.

Why pocket coil mattress?

Each independent barrel shaped spring is wrapped in a non-woven fabric, and each coil functions independently to provide the optimum firmness that is most suitable for proper support & posture.

- Urethane Foam 15mm, Coil thickness:1.9mm, Height: 180mm, Height wrapped in casing: 140mm
- Features numerous areas of firmer support to hold your body weight
- Creates an even distribution of weight to ensure a stable posture
- Reduces the amount of sinking



Single
W38.0" x D76.7" x H7.5"
4550182258943
\$800.00

Double
W55.0" x D76.7" x H7.5"
4550182258967
\$900.00

Queen
W63.0" x D76.7" x H7.5"
4550182258974
\$1,000.00

Rotate your mattress to extend its lifespan

We recommend rotating your mattress 180 degrees every season, as the strength of the springs may deteriorate if weight is continuously applied to the same areas. By swapping the mattress orientation and distributing your body weight evenly over time, you can reduce the load on the springs. Make sure to also periodically air the mattress by standing it up for a brief time.

Wooden Bed

With its simplistic design, the bed frame suits any room, while featuring ample storage space underneath due to the 11.8" length legs. Maximize vertical space by using various storage options under the bed.



Single
W39.4" x D79.3" x H29.1"
4550182944495
\$500.00

Double
W56.3" x D79.3" x H29.1"
4550182944518
\$600.00

Queen
W64.2" x D79.3" x H29.1"
4550182944525
\$700.00

Wooden Bed Storage



Wooden Bed Storage Box with Divider
W37.2" x D24.6" x H7.3"
4550344303986
\$120.00



Pocket Coil Mattress with Legs

It's a simple bed that focuses on comfort and materials. The versatile design allows it to be used as a sofa. Compared to our other beds, its design is more compact and its easier to take apart when moving.

Pocket Coil Mattress with Legs and Cover (Legs sold separately)



Single
W38.6" x D78.0" x H10.2"
4550344906781
\$900.00

Double
W55.1" x D78.0" x H10.2"
4550344906804
\$1,000.00

Wooden Legs



Natural M8
12 CM
4550002529406
\$50.00



Natural M8
20 CM
4550002528355
\$50.00



Natural M8
26 CM
4550002529444
\$50.00

**Please check the dimensions and package sizes carefully to ensure they fit through the passageways of your home (hallways, doorways, and elevators) prior to purchasing. There is no refund on delivery and handling fees due to package sizes being unable to fit through any passageways.

Information

Stores / Delivery / Return & Exchange Policy

Ontario

MUJI Atrium
20 Dundas St West,
Toronto, ON M5G 2C2
Tel. 416.591.2233

MUJI Yorkdale
3401 Dufferin Street,
Toronto, ON, M6A 2T9
Tel. 416.479.1204

MUJI Scarborough Town Centre
300 Borough Drive,
Scarborough, Ontario, M1P 4P5
Tel. 416.643.0756

MUJI Markville
5000 Highway 7,
Markham, ON, L3R 4M9
Tel. 905.201.3587

MUJI Square One
100 City Centre Drive,
Mississauga, ON, L5B 2C9
Tel. 905.276.2737

Online Store

www.MUJI.ca

British Columbia

MUJI Guildford
10355 152ST, #1047,
Surrey, BC V3R 7C1
Tel. 604.238.0990

MUJI Robson Street
1125 Robson Street,
Vancouver, BC, V6E 1B5
Tel. 604.831.2718

MUJI Richmond Centre
6551 No 3 Rd, Unit 1624
Richmond, BC V6Y 2B6
Tel. 604.248.1558

MUJI Metrotown
4820 Kingsway, Unit M163
Burnaby, BC, V5H 4J2
Tel. 604.638.8180

Delivery Fee

Carry-in Service Starting from \$75 based on location
Doorstep Service Starting from \$50 based on location, size and weight.

*Shipping rates, charges, and services are subject to change without notice. Please check with sales associate for more information.

Delivery Area & Time

Limited areas only, please check with sales associate.

Deliveries are from Monday to Friday (10 am - 4pm), varies based on location.

**Please schedule an appointment for your delivery after your purchase in store.

Return / Exchange Policy

- Merchandise must be returned / exchanged to the store where it was purchased within 30 days of purchase with a receipt.
- All returned merchandise must be unopened in original packaging, new condition, unused with original tags.
- No returns / exchanges on sale items.
- No refunds on delivery fee and handling fee for any returned / exchanged merchandise.
- No refunds on delivery fee and handling fee for packages that don't fit through the passageways and are returned to the store. Please your spaces to ensure delivery is possible.
- MUJI reserves the right to deny any return/exchange based on the condition of the merchandise.

All product and price information may be subject to change. Any dimensions quoted are for guidance only. Prices and product details should be checked at one of MUJI Canada stores before any purchases. All products are subject to availability.
© 2022 MUJI CANADA LIMITED All Rights Reserved.