

This brush is designed to wash the inside of PET Refillable Bottles. It reaches every corner of the bottle for a through wash.

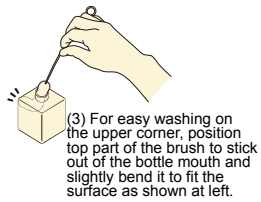
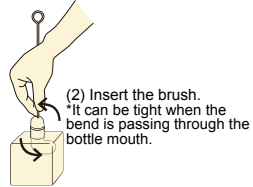
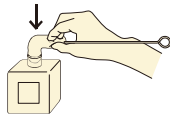
● For use with:  
PET REFILLABLE BOTTLE 600 ml  
PET REFILLABLE BOTTLE 400 ml  
PET REFILLABLE BOTTLE 280 ml  
PET REFILLABLE BOTTLE 250 ml

● How to use  
Align the brush with the bottle mouth and insert to wash.

⚠ **Precautions when washing PET REFILLABLE BOTTLE 250ml/280ml**

● The bottle mouth is narrow. Follow the steps below to insert the brush.  
\*Reverse the actions listed in (1) and (2) to remove the brush.

(1) Hold the brush stem to insert the tip.



● Precautions for use  
● Be careful not to touch the tip of the wire when washing the brush. Doing so may cause injury. ● Do not use this product for any other purpose than its intended use.  
● Beware that the inner wire might scratch the bottle surface if scrubbed too hard. ● Do not pull bristles too hard. Doing so may cause them to fall out. ● Do not use bleach, cleansers, polishing powder or thinners. ● Do not place near an open flame or in high-temperature. ● Use and store out of children's reach. ● **After use, wash thoroughly, drain and dry.**

HANDLE: STAINLESS STEEL  
BRISTLES: POLYPROPYLENE  
MADE IN JAPAN