

MUJI 無印良品

ANALOG BATH CLOCK (Model No. MJ-BC2)

User Manual

This clock can be used in a bathroom as a table clock or wall clock.

- Thank you for your purchase.
- Read this User Manual before use to ensure the correct use of the product.
- Retain this User Manual for future reference.

User Manual No. 8MG810AZ-EN4 (Y2111)

Accessories

AA manganese battery 1
This User Manual 1

Manufactured by
RYOHIN KEIKAKU CO., LTD.
4-26-3 Higashi-ikebukuro, Toshima-ku, Tokyo, JAPAN

Imported to EU by
MUJI Deutschland GmbH
Kurfuerstendamm 236, 10719 Berlin, Germany


Imported to Australia by
MUJI RETAIL(AUSTRALIA)PTY LTD
Level 5 90 William Street Melbourne, VIC 3000, Australia

Safety Advice

Please read carefully and be sure to follow the instructions.

Graphic Symbol Explanations

- ⊘ indicates prohibited actions.
- ⚠ indicates compulsory actions.

 This product complies with all relevant and effective European Community legislations.



This symbol on the product, packaging, and/or accompanying document indicates that this product should not be disposed with normal household waste. This product shall be taken to the applicable collection point for recycling. The correct disposal of your old product will help prevent potential negative consequences for the environment and human health. For more information about recycling of this product, please contact the shop where you purchased the product, or your local authority.



This symbol on the battery or on the packaging indicates that the battery provided with this product shall not be treated as household waste. Please inform yourself about the local rules on separate collection of batteries. The correct disposal of batteries helps to prevent potentially negative consequences for the environment and human health.

 **WARNING** Indicates a hazard which may cause death or serious injury.



Do not place small parts and battery within reach of small children.

Small children may accidentally swallow the product. If swallowed, immediately seek medical advice.



Do not touch the liquid leaked out of battery.

If it comes in contact with the eyes or skin, it may cause blindness, inflammation, or other injuries. In case of contact, rinse immediately well with tap water and seek treatment from a physician.



- **Do not short-circuit the battery.**
- **Do not disassemble the battery.**
- **Do not damage the battery.**
- **Do not charge the battery.**
- **Do not heat the battery.**
- **Do not expose the battery to fire.**

Doing so may cause battery leakage, heating, or explosion.



CAUTION Indicates a hazard which may cause injury or product damage.



Do not insert the battery with ⊕ and ⊖ reversed.

Doing so may cause battery leakage or heating, resulting in a malfunction or injury.



Do not use a rechargeable battery.

Doing so may cause a malfunction.



Check the operating environment described in Specifications and use within the specified temperature and humidity range.

Not doing so may cause rust or malfunction.



Bring the product to room temperature before taking it to a place with high temperature, such as a bathroom.

A sudden temperature change may cause condensation inside the product, resulting in rust or malfunction from short-circuit.



Do not splash liquids such as water containing soap, detergent or bath salt, or sea water, hot spring water, hot water, or chemical liquid other than tap water on it.

Doing so may deteriorate the waterproof performance.



Do not place into water or hot water, and do not splash tap water directly on it.

This is not completely waterproof. If water enters the clock, it may malfunction.



Do not allow foreign objects, such as dirt or sand, to come into contact with the rubber seal.

Doing so may deteriorate the waterproof performance.



Wipe the product immediately with a dry cloth if it is exposed to a large amount of water or dropped into water.

Leaving it wet may cause rust or malfunction.



Wipe off moisture and place the product in a place with low humidity after using it in a bathroom, etc.

Leaving it wet may cause rust or malfunction.



Attach/remove the back cover in a place with low humidity, and wipe away any moisture on the product and dry your hands beforehand.

Moisture left inside the product may cause it to rust or the display to fog.



Do not touch inside the clock with wet hands.

Doing so may cause rust or malfunction.



Make sure that the back cover is securely attached.

Not doing so allows moisture or grease to enter the clock, resulting in rust or malfunction.



Take the following precautions to prevent battery leakage or explosion.

- If the clock stops, replace the battery with a new one or remove the battery.
- Replace the battery regularly once a year.



Do not use in the following places.

Doing so may cause degradation of the performance, deformation, deterioration, or degeneration of the materials, or malfunction of the product.

- Locations exposed to direct sunlight.
- Locations close to fire or heat from heating appliances.
- Locations with temperatures of -10 °C (14 °F) or lower or 50 °C (122 °F) or higher.
- Locations in the proximity of equipment with a strong magnetic field.
- Locations where the product is subject to excessive vibration such as vehicles, ships, or construction sites.
- Locations exposed to a lot of dust.
- Locations where gas is generated such as a swimming pool or hot spring.
- Locations where large quantities of oil are used, such as a kitchen.
- Locations where the product is in direct contact with rubber or soft polyvinyl chloride for a long period of time. It may cause adhesion, deterioration, or colour transfer.



When hanging the clock, take the following precautions to prevent the product from falling off.

- Use a hanging fixture on which the hook can be securely hung and confirm that it is secure.
- Hang vertically.
- Install the clock in a place that is not subject to vibration caused by opening/closing doors.
- Do not use adhesive or suction cup hooks.



Remove the battery from the clock when not in use.

Keeping the battery in may cause leakage.



Do not subject to impact, such as strong vibration or dropping.

Doing so may cause malfunction or damage.



Make sure to attach the rubber seal when using this product.

Not doing so may cause rust or malfunction.



Do not disassemble or modify.

Doing so may cause injury or malfunction.



Do not use benzene, thinner, alcohol, or spray cleaners to clean.

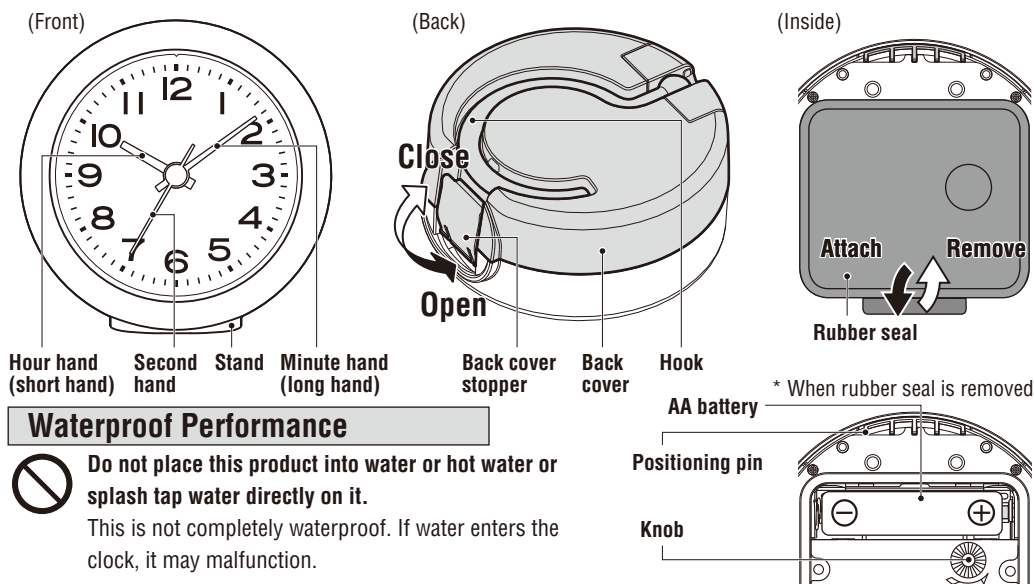
Doing so may cause discolouration or dissolving of the product.

Maintenance

- If the clock gets dirty, clean it with a soft cloth soaked in a mild detergent or soapy water then wipe dry.
- The wall on which the clock is hung may get dirty due to static electricity. Clean the wall regularly.

Name and Function of Each Part

© Illustrations are for descriptive purposes only and may differ from the actual product.



Waterproof Performance

Do not place this product into water or hot water or splash tap water directly on it.

This is not completely waterproof. If water enters the clock, it may malfunction.

This product has a waterproof performance equivalent to IEC/EN 60529 IPX4 (splash proof).

* IPX4 indicates protection against water sprayed from all directions.

* Due to the structure of this product, moisture may adhere to around the rubber seal or inside the back cover. It does not affect product performance, but remove the moisture if any.

* The rubber seal inside the clock is designed to maintain airtightness. The waterproof effect of the rubber seal gradually deteriorates, but the degree varies depending on the operating environment.

Attachment and Removal of the Back Cover

CAUTION

Do not attach/remove the back cover in a place with high humidity, such as a bathroom, and make sure to wipe any moisture off the product and your hands beforehand.

Removing the back cover

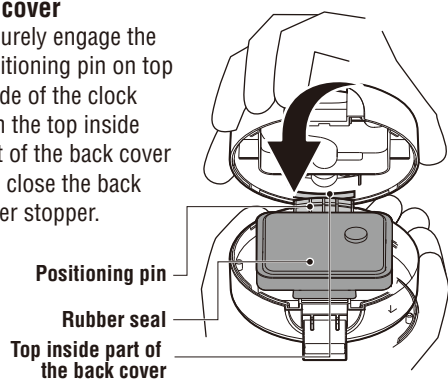
Level the clock, raise the hook, and open the back cover stopper at the bottom of the stand to remove the back cover.

* If you open the cover with the clock held diagonally when water remains in the hook groove, the water may enter the clock.

* Note that the back cover stopper is firmly fixed to maintain airtightness.

Attaching the back cover

Securely engage the positioning pin on top inside of the clock with the top inside part of the back cover and close the back cover stopper.



Battery

Replacing the battery

Wipe off any moisture before removing the rubber seal, then replace the battery in a place with low humidity.

CAUTION

Take the following precautions to prevent battery leakage or explosion.

- If the clock stops, replace the battery with a new one or remove the battery.
- Replace the battery regularly once a year.

Types of battery

CAUTION

Do not use a rechargeable battery. Doing so may cause a malfunction.

Battery Life

- Alkaline batteries have a longer life than manganese batteries.
- The supplied battery is installed at the time of shipment from the factory, so it may last less than the specified battery life.
- Depending on the operating environment including temperature, the battery life may be shorter than specified period.

Battery and Product Disposal

- Follow the rules and regulations of your local government.
- Dispose of the product and battery separately.

How to Use

1. Attach/remove the back cover.

When replacing the battery or setting the time, remove the back cover and rubber seal. After the operation, be sure to put them back.

* For details on how to attach/remove the back cover, see "Attachment and Removal of the Back Cover."

2. Insert the battery.

Insert the battery into the battery holder as indicated by the polarity symbols \oplus and \ominus .

3. Set the time.

Turn the knob in the direction of the arrow to set the correct time.

CAUTION

Do not touch inside the clock with wet hands. Doing so may cause rust or malfunction.

Make sure that the back cover is securely attached.

Not doing so allows moisture or grease to enter the clock, resulting in rust or malfunction.

Make sure to attach the rubber seal before using this product.

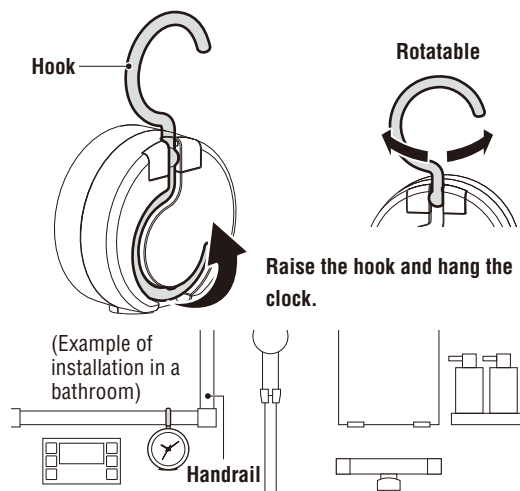
Not doing so may cause rust or malfunction.

Do not insert the battery with \oplus and \ominus reversed.

Doing so may cause battery leakage or heating, resulting in a malfunction of the product or injury.

How to Hang the Clock

Raise the hook on the back side and hang the clock on the hanging fixture.



CAUTION

When hanging the clock, take the following precautions to prevent the product from falling off.

- Use a hanging fixture on which the hook can be securely hung and confirm that it is secure.
- Hang vertically.
- Hang it in a place not subject to vibration caused by opening/closing doors.
- Do not use adhesive or suction cup hooks.

* When hanging on a wood pillar, a plasterboard wall, or a concrete wall, etc, use a commercially available hanging fixture that suits the properties of materials and structure of the wall, and has enough strength to withstand the weight of the clock.

Troubleshooting

Check the following items if the product does not appear to be working properly.

Problem	Cause and Solution
The clock is slow or fast.	Time accuracy is affected by temperature, which may cause the clock to run faster or slower. → If the time difference becomes large, turn the knob in the direction of the arrow to adjust the time.
The hands are not moving.	<ul style="list-style-type: none"> • The battery is inserted with \oplus and \ominus reversed. → Reinsert the battery in the correct direction. • The battery is low or dead. → Replace it with a new one.

Specifications

Operating Environment

: Temperature: between -10 °C and 50 °C (14 °F and 122 °F)
: Humidity: 85 %RH or lower
* No condensation allowed

Clock Function

: Quartz
Time Accuracy : Average monthly difference \pm 20 seconds
When used at temperatures between 5 °C and 35 °C (41 °F and 95 °F)

Power Source

: AA manganese battery R6P (1.5 V) \times 1

Battery Life

: Approx. 1 year

Dimensions

: W85.5 \times D39.5 \times H86 mm (W3.4 \times D1.6 \times H3.9 in) (when hook is encased)

Weight

: Approx. 130 g (0.29 lb) (including battery)

Materials

: Case: ABS resin/
Windshield: PMMA resin

Waterproof Grade

: IPX4