

Waterless Aroma diffuser

Model No. MJ-HBAL1GL

User Manual

For Household Use

Thank you for your purchase.

- Read this User Manual before use to ensure correct use of the product.
- Make sure to read the Safety Advice before use.
- Keep the User Manual in an accessible place for future reference.

This product is an aroma diffuser that uses an air pump to deliver air and directly nebulise aroma oil without using water.

This product is designed to be used with MUJI Essential Oil 10 mL.

Table of Contents

Safety Advice	1
Part Names	4
Preparation	5
How to Use	7
Cleaning the Product	9
Troubleshooting	11
Specifications	12

Safety Advice

The cautionary information indicated here is intended to ensure correct use of the product and to prevent harm to the users and other individuals or damage to the product.

Classification of the Symbol

In this User Manual, the items to be followed are classified as below.



WARNING

Indicates a hazard with a level of risk which, if not avoided, may result in death or serious injury to the user.



CAUTION

Indicates a hazard with a level of risk which, if not avoided, may result in injury or product damage.

Instructions are given in the form of the following graphic symbols.



Indicates actions that are prohibited.



Indicates actions that are compulsory.



WARNING



Do not intentionally inhale the atomised aroma oil as this product is not a medical inhaler (nebuliser).

Doing so may irritate the respiratory system and could cause allergic reactions or other health issues.



If you feel any changes in your health, stop using it immediately. It may cause unexpected reactions in the body, such as allergic reactions or hypersensitivity.



Do not disassemble, repair or modify.

Doing so may result in an electric shock or injury.



Do not allow children to use the product without supervision. Keep out of reach of small children and pets.

Doing so may cause an electric shock, burn and/or injury.



Consult a physician before using this product if you are pregnant, a child, or elderly.

It may be harmful to their health.

At the Time of Abnormality/Malfunction



In case of an abnormality or malfunction, immediately turn off the power and unplug the USB connector.

Examples of Abnormality/Malfunction

- There is an abnormal sound, smell or smoke.
- The USB connector or the USB cable becomes unusually hot.
- The power supply becomes unstable when the USB cable is moved.
- There are cracks, looseness or wobbles in parts of the main unit.

Continued use under these conditions may cause an electric shock, burn, injury, a short circuit and/or a fire.

USB Cable



Do not use a power supply exceeding 5 V/2 A.

Doing so may cause electric shocks and overheating due to overvoltage, and can lead to fire.

Please use the power adapter complying with IEC 60335-1 and IEC 60335-2-29 to supply power for USB plug.

The appliance must only be supplied at safety extra low voltage.

WARNING

USB Cable



Do not handle the USB connector/cable in the following ways:

- Damaging • Processing • Bending forcefully • Pulling • Twisting • Bundling • Placing a heavy object on it • Pinching

Doing so may cause an electric shock, burn, injury, short circuit, and/or fire.



Do not use when the USB connector/cable is damaged or loosely inserted.

Otherwise it may cause an electric shock, burn, injury, a short circuit and/or a fire.



Do not plug/unplug the USB connector with wet hands.

Doing so may result in an electric shock or injury.



Plug the USB connector securely.

Incomplete plugging may cause an electric shock, burn, injury, a short circuit and/or a fire.



Regularly clean dust on the USB connector.

Failure to do so may cause an insulation failure due to moisture etc., resulting in a short circuit and/or a fire.



Unplug the USB connector when cleaning the product.

Not doing so may cause an electric shock.



Hold the USB connector instead of the cable when unplugging it.

Not doing so may cause insulation deterioration leading to an electric shock, a short circuit, an ignition, or a fire due to electric leakage.



Unplug the USB connector if the product will not be used for a long period of time.

Not doing so may cause insulation deterioration leading to an electric shock, a short circuit, an ignition, or a fire due to electric leakage.



Use the included USB cable or the dedicated USB cable sold separately.

Failure to do so may cause ignition, a fire, or a malfunction.

Using the Product



Do not use in a way that is not described in the User Manual.

Doing so may cause injury or harm to your health.



Make sure to use MUJI's Essential Oil 10 mL.

The use of other substances may give rise to a toxic or fire risk.



Do not insert any object such as a piece of metal into the gaps.

Doing so may cause an electric shock, a short circuit, an ignition, a fire or a malfunction.



Do not submerge the main unit into water or splash water on it.

Doing so may cause an electric shock, a short circuit, an ignition, or a fire due to electric leakage.



Do not drop, hit, knock over the main unit, or subject it to strong shocks.

Doing so may cause a short circuit, a fire or a malfunction.



Do not use in places listed below.

- Unstable places
- In proximity to fire
- Subject to water splashes or outdoors.
- Subject to direct sunlight for a long period of time.

Doing so may cause a short circuit, a fire or a malfunction.



Do not cover the mist outlet.

Doing so may cause a short circuit, a fire or a malfunction.



Do not use in a car.

In a confined car interior, inhaling atomised aroma oil can cause health issues. Using the vehicle's power supply can lead to short circuits, ignition, fires, or malfunctions.

⚠ CAUTION



Fit the bottle cap opener firmly in between the cap and the rim of the bottle.

Otherwise the bottle cap opener may become displaced when pushed, causing injury.



Do not lay or shake the product, or place it upside down.

Doing so may cause fluid to leak, resulting in damage or discolouration.



Do not bring your face or hands close to the mist outlet.

Doing so may cause aroma oil to get in your eyes or on your skin, resulting in inflammation.



If aroma oil comes into contact with eyes, do not rub the eyes. Immediately rinse them thoroughly with large amount of tap water or other clean water and seek medical advice.

Substances in the aroma oil may cause irritation to the eyes.



Do not use the following solvents or detergents when cleaning the main unit.

Thinner, alcohol, benzene, gasoline, paraffin, sprays, alkaline detergents, chemically treated cloth, or abrasive-containing cleaning agents.

These substances can cause scratches to the surface, or deformation and discolouration of the parts.



Do not dry the parts with a hair dryer or under direct sunlight after cleaning.

Doing so may cause deformation.



Clean the nozzle cap if the product will not be used for a long period of time.

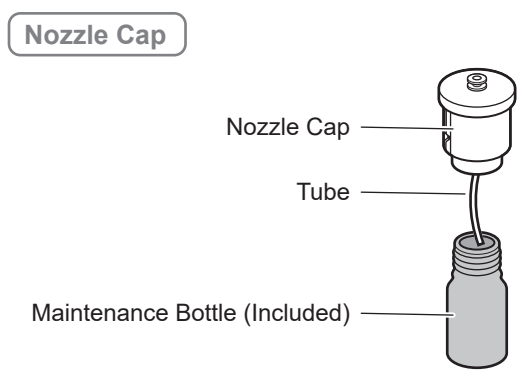
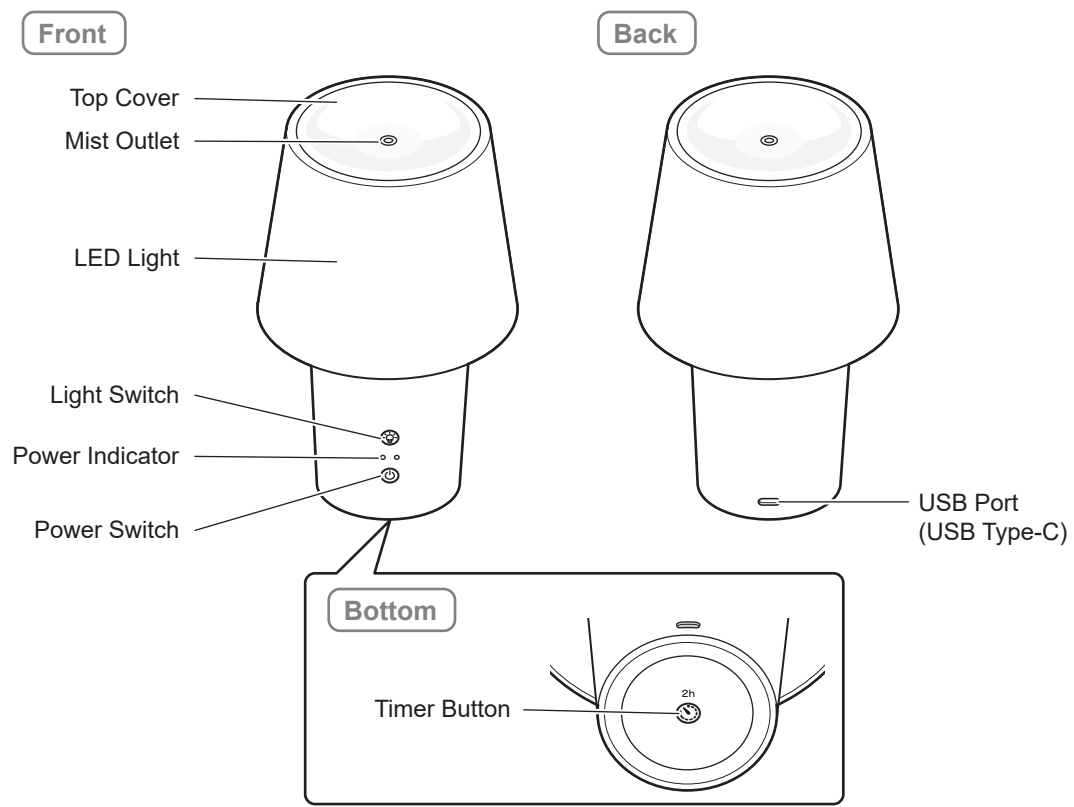
Not doing so can cause essential oil to harden inside the cap, resulting in a malfunction.

This product is not intended to be used alone by the following individuals. For their safety, use under supervision of a guardian or a carer.

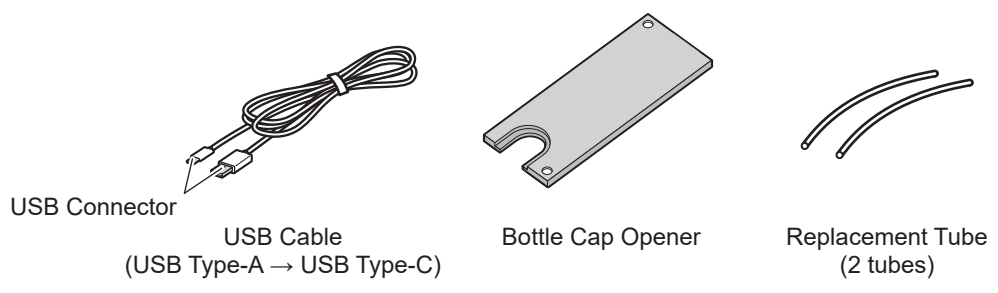
- Small children
- Persons who need assistance
- Persons who are not familiar with how to use the product

Especially, do not let children play with the product.

Part Names



Accessory



Preparation

Setting Essential Oil

⚠ WARNING

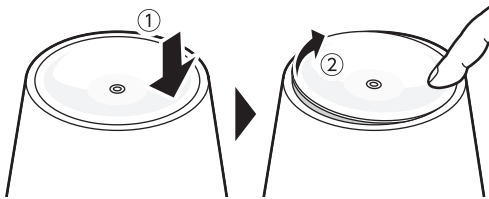


Make sure to use MUJI's Essential Oil 10 mL.

The use of other substances may give rise to a toxic or fire risk.

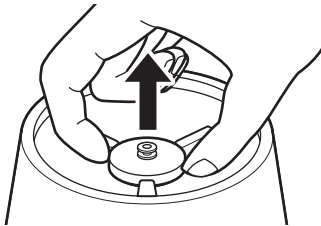
1 Remove the top cover.

- 1) Push the edge of the top cover to tilt it.
- 2) Hold the lifted part and remove the top cover.



2 Remove the nozzle cap.

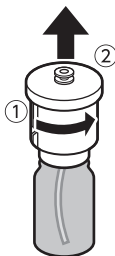
Hold the nozzle cap and lift upwards.



To set a new essential oil after cleaning, go to Step 4.

3 Remove the maintenance bottle from the nozzle cap.

Turn the nozzle cap anticlockwise to remove.



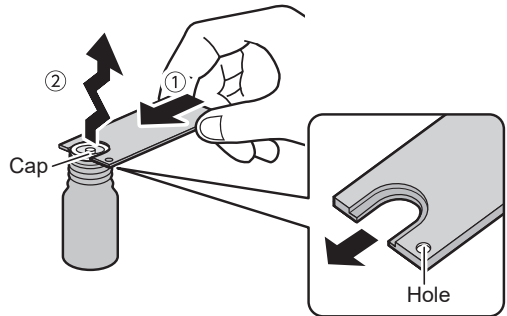
Note

- The maintenance bottle is empty before initial use. It is used when cleaning the main unit. Do not discard it after removing from the nozzle cap.

4 Open the lid of the essential oil to be set.

5 Remove the cap of the essential oil.

- 1) Fit the bottle cap opener in between the cap and the rim of the bottle. Hold the bottle firmly so it does not fall.
- 2) Lift the cap with the bottle cap opener to remove.



Use the bottle cap opener with the small hole in the corner on the left side.

⚠ CAUTION



Fit the bottle cap opener securely in between the cap and the rim of the bottle

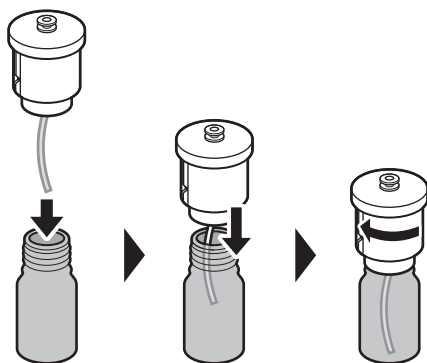
Otherwise the bottle cap opener may become displaced when pushed, causing injury.

Note

- Wipe off with facial tissue if there is any oil adhered on the bottle cap opener or removed cap. If aroma oil comes into contact with your hands or skin, wash thoroughly with soap.
- Keep the lid/cap of the essential oil and do not discard them. They will be used when the essential oil is taken out of the main unit for cleaning, etc.

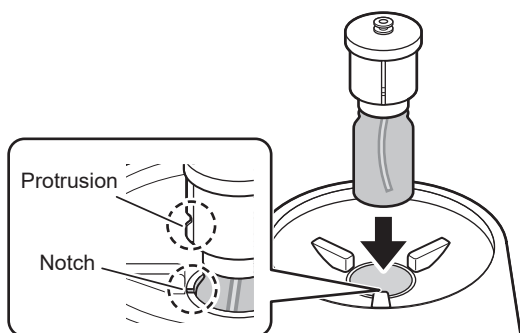
6 Attach the nozzle cap on the essential oil.

Insert the tube into the bottle of essential oil and turn the nozzle cap clockwise to securely fix it.



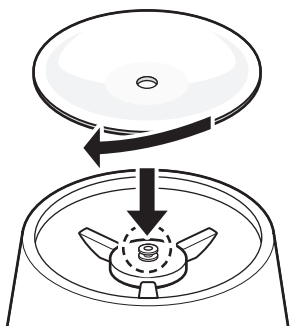
7 Attach the nozzle cap and the essential oil to the main unit.

Align the protrusion of the nozzle cap with the notch of the main unit and push in until you hear a click.



8 Reattach the top cover.

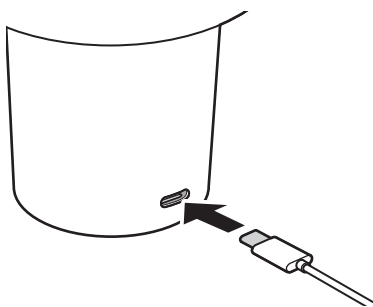
Align the centre hole of the top cover with the mist outlet and slightly turn to attach.



Connecting USB Cable to Main Unit

1 Connect the USB cable to the main unit.


Insert the USB connector (USB Type-C) of the USB cable into the USB port (USB Type-C) of the Main Unit.



How to Use

- 1 Insert USB connector (Type-A) into a USB power source.


Insert the USB connector (Type-A) of the USB cable connected to the main unit into a USB power source. All the LED light will turn on for about 2 seconds, then turn off.

- 2 Press and hold down the power switch  for 3 seconds or longer.

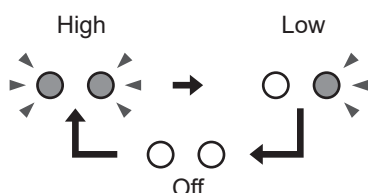
The power indicator will turn on and operation will start on High. Essential oil will be sprayed from the mist outlet.

Note

- While in operation, you will hear the air pump operation sound and the spraying sound from the mist outlet.

- 3 Press the power switch  to set an operation mode.

Switch the operation modes to change the amount of mist. Every time the power switch is pressed, the power indicator and operation mode switch.



High	The cycle of spraying for 15 seconds, and pausing for 2 minutes and 45 seconds will be repeated.
Low	The cycle of spraying for 8 seconds, and pausing for 2 minutes and 52 seconds will be repeated.

Note

- **The aroma diffuser function will turn off automatically after 8 hours from the start of use, even without setting a timer.**

* The LED light will not turn off automatically even after 8 hours.

- Approximate lasting duration of Essential Oil 10 mL
High: Approx. 25 days, Low: Approx. 50 days (When used 2 hours/day)

- 4 Turn off the power indicator to stop the operation.

Press the power switch 1 or more times to turn off the power indicator to stop the operation.

- 5 Unplug the USB connector.

Note

- When using fans, air circulators, or other air conditioning units, or when windows are open, the scent of essential oils may be less noticeable.
- The consumption of essential oils varies depending on the type used. Citrus oils tend to be consumed more quickly, while botanical oils tend to be consumed more slowly.
- Depending on the type of the essential oil, mist can be difficult to see.
- Depending on the essential oil used, the colour and scent will be transferred to the main unit, top cover or nozzle cap. Clean the parts if necessary. (Refer to 'Cleaning the Product')

Switch Essential Oil

When switching the essential oil, follow the steps below:

- 1 Clean the main unit. (Refer to 'Cleaning the Product')

Clean the main unit and ensure that the scent of the previously used essential oil does not remain.

- 2 Set a new essential oil. (Refer to 'Preparation: Setting Essential Oil')

Note

- If the scent of the previously used essential oil remains strong even after cleaning, replace the tube of the nozzle cap. (Refer to 'Replacing Tube')
If the scent still lingers, replace the nozzle cap. (Refer to 'Parts')


Using LED Light

- 1 Insert the USB connector (Type-A) of the USB cable connected to the main unit into a USB power source.

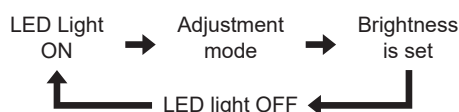
The LED light will turn on for 2 seconds, then turn off.


Note

- The LED light can be used even while the operation of the aroma diffuser is off.
- The LED light cannot be replaced.
- The LED light is Warm White colour 2,000 to 2,500 K.

- 2 Press the light switch .


The LED light illuminates at maximum brightness. Every time the light switch is pressed, status of LED light will change.



- 3 Press the light switch  to adjust the brightness.

To adjust the brightness, press the light switch to start the adjustment mode. During the adjustment mode, the brightness automatically changes from Minimum → Maximum → Minimum. (The cycle of the adjustment mode repeats every 17 seconds.)

When the light switch is quickly pressed twice, the light illuminates at minimum brightness.

- 4 Press the light switch  at your desired brightness.

Press the light switch at your desired brightness during the adjustment mode. Brightness will be set when the light switch is pressed.

- 5 Turn off the LED light

To turn off the LED light, press the light switch 1 or more times.

Note

- Once the light is turned off, the brightness will be reset.

Setting Timer

Setting the timer will automatically turn the aroma diffuser function off 2 hours after setting.

*The timer cannot be set for the LED light.

Note

- The aroma diffuser function will turn off automatically after 8 hours from the start of use, even without setting a timer.
- * The LED light will not turn off even after 8 hours.


- 1 Lifting up the main unit while the aroma diffuser function is in operation.

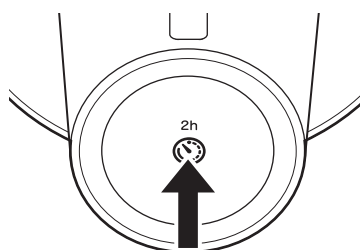
CAUTION



Do not lay or shake the product, or place it upside down.

Doing so may cause fluid to leak, resulting in damage or discolouration.

- 2 Press the timer button .



Setting timer	Press the timer button once.
Cancelling timer	While the timer is set, press the timer button once.

Aroma diffuser function will be turned off after 2 hours.

Cleaning the Product

⚠ WARNING



Do not submerge the main unit into water or splash water on it.

Doing so may cause an electric shock, a short circuit, an ignition, or a fire due to electric leakage.



Unplug the USB connector when cleaning the product.

Not doing so may cause an electric shock.

⚠ CAUTION



Do not use the following solvents or detergents when cleaning the main unit.

Thinner, alcohol, benzene, gasoline, paraffin, sprays, alkaline detergents, chemically treated cloth, or abrasive-containing cleaning agents.

These substances can cause scratches to the surface, or deformation and discolouration of the parts.

Clean the main unit and the parts (top cover, nozzle cap and tube) about once a month or when switching the essential oil.

Note

- If the scent of the previously used essential oil remains strong even after cleaning, replace the tube of the nozzle cap. (Refer to 'Replacing Tube')

If the scent still lingers, replace the nozzle cap. (Refer to 'Parts')

Surface of Main Unit and Parts

Note

- Use commercially available neutral kitchen detergent.

Soak a cloth in diluted neutral kitchen detergent, wring it well, and wipe. Then, wipe with a dry, soft cloth. Wipe it until no detergent or moisture remains.

Nozzle Cap

Note

- Use commercially available anhydrous ethanol and the maintenance bottle (included).
- Use anhydrous ethanol for cleaning the nozzle cap and the inside of the tube.
- Store the essential oil that was set in the unit after attaching the cap and lid securely.

1

Put anhydrous ethanol into the maintenance bottle.

Fill anhydrous ethanol up to about one-third of the maintenance bottle capacity.



Anhydrous ethanol

2

Attach the nozzle cap with a tube to the maintenance bottle.

3

Set the maintenance bottle to the main unit. (Refer to 'Preparation: Setting Essential Oil')

- 1) Set the maintenance bottle filled with anhydrous ethanol into the main unit.
- 2) Attach the top cover.

4

Connect the USB cable to the main unit. (Refer to 'Preparation: Connecting USB Cable to Main Unit')

5

Operate on High for about 2 hours (Refer to 'How to Use')

6

Turn off the power and unplug the USB connector.

- 7** Take out the maintenance bottle from the main unit and remove the nozzle cap from the maintenance bottle.

(Refer to 'Preparation: Setting Essential Oil' **1** to **3**)

- 8** Wipe off any anhydrous ethanol that has adhered to the nozzle cap and tube.

Wipe off any anhydrous ethanol that has adhered to the nozzle cap and tube using a cloth or facial tissue.

- 9** Let it dry.

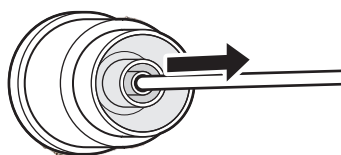
Let it dry well in a well-ventilated place.
Replace the essential oil after cleaning.

Replacing Tube

If the scent of the previously used essential oil remains strong even after cleaning, replace the tube of the nozzle cap.

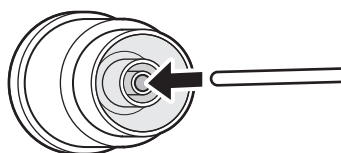
- 1** Remove the tube.

While holding the nozzle cap, pull out the tube.



- 2** Attach a new tube.

Insert the new tube into the centre hole of the bottom of the nozzle cap and push in until it does not go further.



When Not in Use for a Long Period of Time

1. Clean the surface of the main unit and the nozzle cap.
2. Let the inner container and other parts dry well.
3. To prevent insects, dust, and other contaminants from entering, seal the product in a plastic bag or similar and store it away from the following places:
 - Subject to direct sunlight.
 - With high temperatures and high humidity
 - Within reach of children
 - Within reach of pets
 - Outdoors

CAUTION



Clean the nozzle cap if the product will not be used for a long period of time.

Not doing so can cause essential oil to harden inside the cap, resulting in a malfunction.

Troubleshooting

If there are any abnormalities with your product, check the following points. If the problems persist, turn off the power and contact the store of purchase.

Problem	Possible cause	Solution	Reference
Operation does not start LED light does not turn on	The USB connector (Type-A) is unplugged from USB power source.	Securely plug the USB connector (Type-A) into the USB power source.	How to Use 1
	A USB cable with USB Type-C connectors on both ends is inserted into the USB port of the main unit.	Make sure to use the USB connector provided with the product or dedicated to the product.	
	The USB connector (Type-C) is unplugged from USB port.	Securely plug the USB connector (Type-C) into the USB port.	Preparation Connecting USB Cable to Main Unit
No scent Scent is weak	The inside of the nozzle cap is clogged.	Clean the nozzle cap.	Cleaning the Product
	There is dirt or dust build-up on the mist outlet.	Clean the top cover and the nozzle cap.	
	Essential oil is out.	Set a new essential oil.	Preparation Setting Essential Oil
Oil is leaking	The nozzle cap is not set properly on the essential oil.	Set the nozzle cap securely to the essential oil.	
Operation suddenly stops	The timer is set.	To cancel the timer, press the timer switch.	How to Use Setting Timer

Check your aroma diffuser that has been used for a long time.

Are there any of the following problems?

- The USB connector is unstable.
- Abnormal sound or burning smell is detected during operation.
- The main unit is unusually hot.
- The USB cable is burnt.



Stop use

To prevent a malfunction and accidents, unplug the USB connector and contact the store of purchase.

Specifications

Model Number	MJ-HBAL1GL
Power Source	5 V / 2 A
Power Consumption	5 W
Product Dimensions	Approx. $\phi 126$ mm (5 in) \times Approx. 203 mm (8 in)
Weight	Approx. 550 g (1.21 lb) (main unit)
Length of USB Cable	1.8 m (70.9 in)
Applicable Floor Area	High: 13.20 m ² * Low: 7.43 m ² *
Noise	39 db or less
Core Materials	Polypropylene

* The consumption and the way fragrance spreads can vary depending on the environment and the type of essential oil used.

Parts

Please contact the store of purchase to order consumables or separately sold parts.

Name	Model Number
Top Cover	MJ-HBAL-LD
Tube (Set of 2)	MJ-HBAL-NZ
Nozzle Cap	MJ-HBAL-ATC
Bottle Cap Opener	MJ-HBAL-OPNGL
USB Cable	MJ-HBCAL-UC
Maintenance Bottle	MJ-HBAL-MBT



This symbol on the product, packaging, and/or accompanying document indicates that this product should not be disposed with normal household waste. This product shall be taken to the applicable collection point for recycling. The correct disposal of your old product will help prevent potential negative consequences for the environment and human health. For more information about recycling of this product, please contact the shop where you purchased the product, or your local authority.

Ryohin Keikaku Co.,Ltd.
2-5-1 Koraku, Bunkyo-ku, Tokyo, Japan

Imported to Australia by MUJI RETAIL (AUSTRALIA) PTY LTD
Level 5 90 William Street Melbourne, VIC 3000, Australia

MUJI 無印良品