

Thank you for purchasing this product.
In order to continually use this product in a safe manner, please thoroughly read these "Instructions for use and assembly" so that you understand the contents before properly assembling and using the product.
Please store the instructions and the attached Allen key, etc. so that they can be retrieved whenever necessary.

【Cautions regarding proper place for assembly and use】

These "precautions regarding proper place for assembly and use" are provided to prevent injury/damage to customers and their surroundings by ensuring safe assembly of MUJI products for continual use.
"Warning" and "Caution" classifications are used depending on the content. Symbols and their meanings are as follows.

	Warning Matters where there is a possibility of death or serious injury.
	Caution Matters where there may occur human injury and physical damage.

【Caution before assembly】

Warning

Packing material that is no longer necessary should be disposed of immediately. Do not keep such materials in places that can be reached

Caution

- Attach legs by carrying out work on top of carpets or mats, etc. to prevent the floor from being scratched.
- If parts are missing or defective during assembly, please immediately stop assembling and contact

【Precautions for use】

Caution The cushion cover can be dry-cleaned after removal.

- * The body cover cannot be dry-cleaned.
- * Do not remove the body cover.

This will cause damage and failure.

Caution Always use with wooden legs attached.

This will cause damage and failure.

Caution

Do not drag when moving.

This will cause damage and failure.

Warning

Do not sit on the back as this is extremely dangerous.

This will cause serious injury or accident.

Warning

Do not sit in a reverse position as this is extremely dangerous.

This will cause serious injury or accident.

Warning

Lever operation with cushions removed is extremely dangerous.

Prohibited

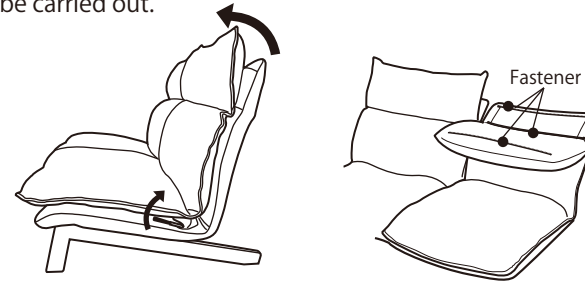
This will cause serious injury.

【Cushion maintenance】

*For details on how to assemble, please refer to the enclosed Instructions for assembly 1 and 2

■ Cushion removal

Removal of cushions from the body enables maintenance to be carried out.



- ① Operate the lever to cause the back to recline.
- ② Unfasten the fasteners in a clockwise direction, and detach the cushions.

Warning Do not operate the lever with cushions removed, as this is extremely dangerous. This will cause serious injury. ❌

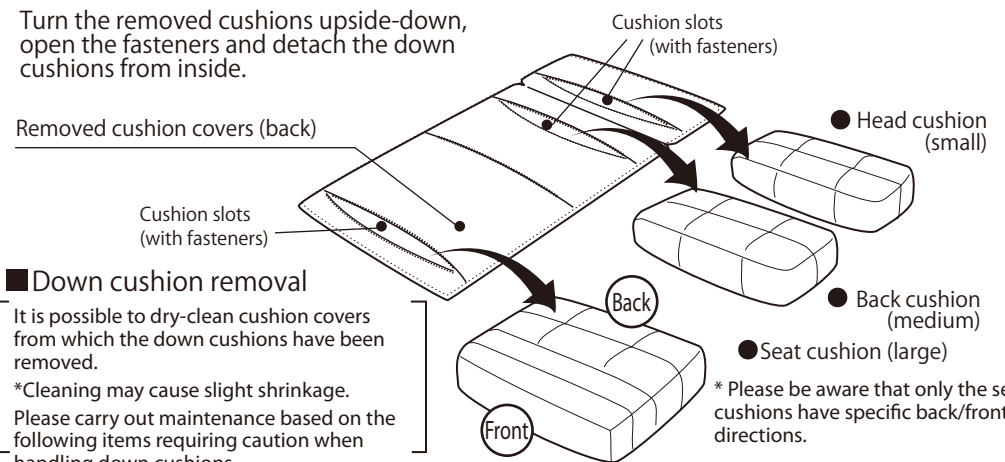
<Fastener removal/installation procedure>

Removal:
When removing, open the fasteners in order from 1.

Installation:
When installing, close the fasteners in order from 4.

■ Down cushion removal

Turn the removed cushions upside-down, open the fasteners and detach the down cushions from inside.



■ Down cushion removal

It is possible to dry-clean cushion covers from which the down cushions have been removed.
*Cleaning may cause slight shrinkage.
Please carry out maintenance based on the following items requiring caution when handling down cushions.

Items requiring caution when handling down cushions

- ◆ A slight characteristic odor remains even after thorough cleaning. This may become noticeable in particularly humid conditions. Dry in a well-ventilated place, beat and replace the air inside with new air for 3-4 hours before drying in the sun.
- ◆ The filling of down cushions may tend to gather in the corners. In order to prevent the cushions from losing their shape, periodically beat the cushions lightly to disperse the down equally.

Please make sure you read this before assembly

Cautions

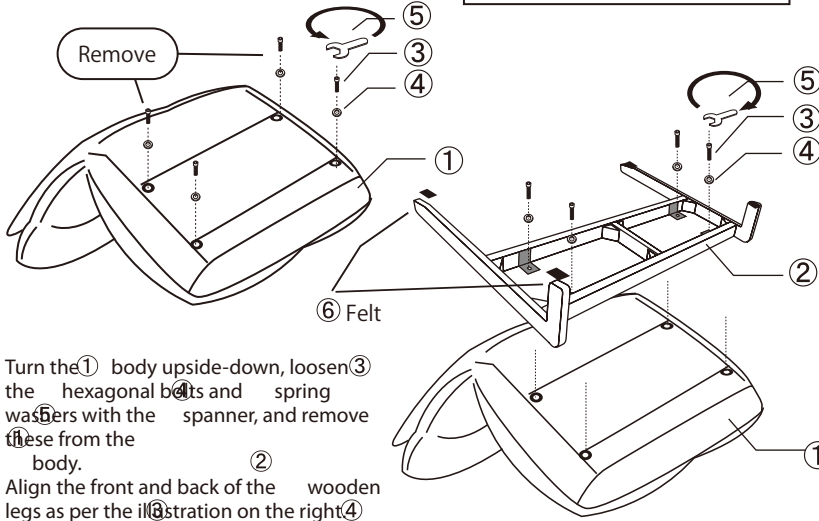
- * When assembling, please reserve sufficient space and exercise caution by laying covers, etc. to prevent flooring and existing furniture from becoming scratched.
- * Assembly should be carried out by at least two persons.
- * Do not use power tools when installing fitting parts.
- * A screwdriver is not included, so please use your own Phillips head screwdriver.

1 Assembly of body and wooden legs

* The assembly illustration shows the two-seater model, but the same assembly also applies for the one-seater.

Cautions

Please carry out assembly work on top of covers such as carpets, etc. in order to



Turn the ① body upside-down, loosen ③ the hexagonal bolts and spring washers with the spanner, and remove these from the body.

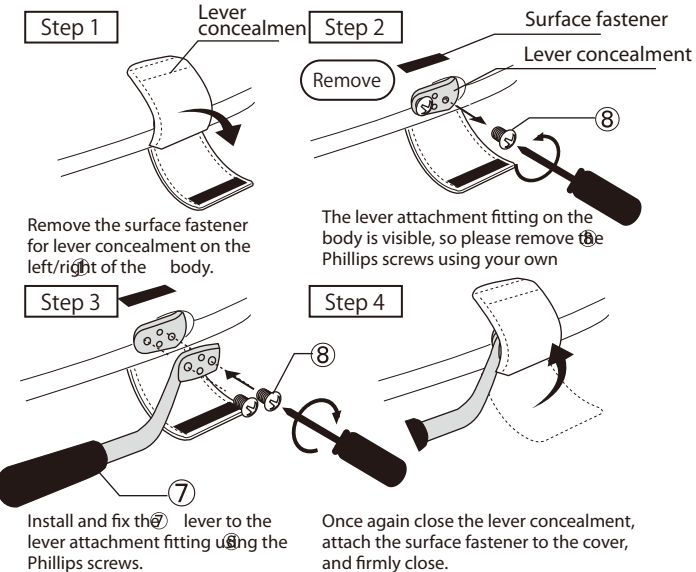
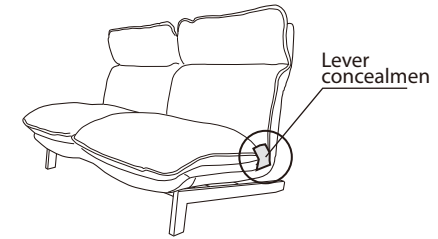
Align the front and back of the wooden legs as per the illustration on the right. Lightly screw the hexagonal bolts and spring washers into all four of the screw holes in the body through the ⑤ screw

When installing the ③ hexagonal bolts in the four points, first temporarily tighten all of the points and then tightly screw and fix

Affix the ⑥ felt stickers to the base of the ② wooden legs.

2 Lever installation

* Please use your own Phillips head screwdriver.
* The lever can be installed on the left or the right.

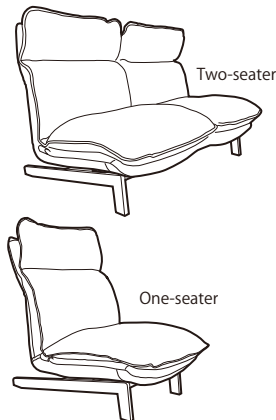


【List of parts】		2S	1S	2S: Two-seater/1S:		2S	1S
①	Body	x 1	x 1	⑤	Spanner	x 1	x 1
②	Wooden	x 1	x 1	⑥	Felt sticker	x 4	x 4
③	Hexagonal	x 4	x 4	⑦	Lever	x 2	x 1
④	Spring washers	x 4	x 4	⑧	Phillips screws	x 4	x 2

*** Note 1**

Parts ③, ④ and ⑧ are assembled in the ① body in advance. Before assembling, please remove using the spanner and your own Phillips head screwdriver.

Completed assembly **⚠ Precautions for use**



- Use on tatami mats and wooden flooring
If the sofa is set and used in the same place for a long time, the flooring surface beneath the sofa's legs may become dented or damaged. Always place the sofa on top of a carpet or mat, etc.
- Maintenance inspections
Periodically inspect and tighten screws.

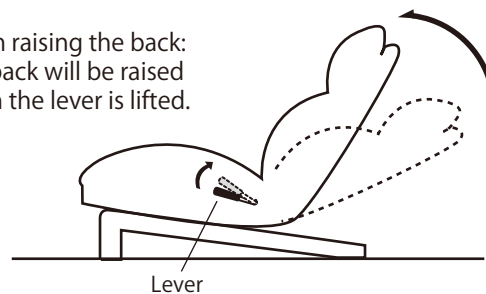
* Please use properly after checking the enclosed "Precautions for use".

【How to recline back/headrest】

■ Back angle adjustment

When lowering the back:
Lower the back with the lever lifted and set the angle by releasing the lever at your preferred angle.

When raising the back:
The back will be raised when the lever is lifted.



■ Headrest angle adjustment

The headrest can be adjusted manually to 6 different levels (including when flat). Match with the back reclining angle to reach your preferred angle.

